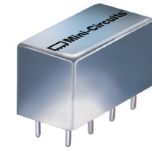


Plug-In Frequency Mixer

SRA-11H+

Level 17 (LO Power +17 dBm) 10 to 3000 MHz



CASE STYLE: A01

Maximum Ratings

Operating Temperature	-55°C to 100°C
Storage Temperature	-55°C to 100°C
RF Power	200mW
IF Current	40mA

Permanent damage may occur if any of these limits are exceeded.

Pin Connections

LO	8
RF	1
IF	3
GROUND	2,5,6,7
CASE GROUND	2,5,6,7
NOT USED	4

Features

- excellent conversion loss, 6.83 dB typ.
- good L-R isolation, 25 dB typ. L-I isolation, 25 dB typ.
- rugged welded construction
- hermetically sealed

Applications

- VHF
- MMDS
- PCS
- GPS
- defense & civil space systems

+RoHS Compliant
The +Suffix identifies RoHS Compliance. See our web site for RoHS Compliance methodologies and qualifications

Electrical Specifications

FREQUENCY (MHz)		CONVERSION LOSS (dB)				LO-RF ISOLATION (dB)						LO-IF ISOLATION (dB)					
LO/RF f_L - f_U	IF	Mid-Band m		Total Range Max.	Total Range Max.	L		M		U		L		M		U	
		\bar{X}	σ			Typ.	Min.	Typ.	Min.	Typ.	Min.	Typ.	Min.	Typ.	Min.	Typ.	Min.
10-3000	10-1000	6.83	.09	10.0	12.0	27	20	25	18	23	16	27	20	25	18	23	16

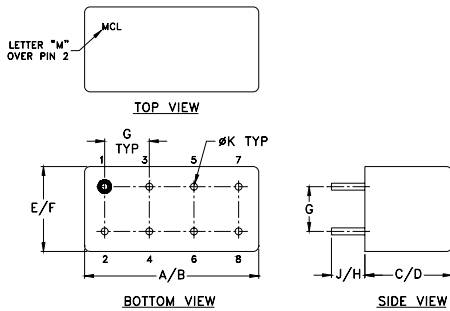
1 dB COMP.: +10 dBm typ.

L = low range [f_L to $10 f_L$]
m = mid band [$2 f_L$ to $f_U/2$]

M = mid range [$10 f_L$ to $f_U/2$]

U = upper range [$f_U/2$ to f_U]

Outline Drawing



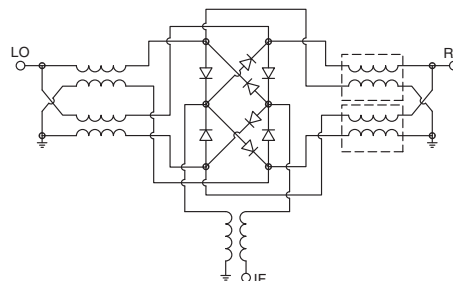
Outline Dimensions (inch/mm)

A	B	C	D	E	F
.770	.800	.385	.400	.370	.400
19.56	20.32	9.78	10.16	9.40	10.16
G	H	J	K		
.200	.20	.14	.031		
5.08	5.08	3.56	0.79		
				wt	
				grams	5.2

Typical Performance Data

Frequency (MHz)		Conversion Loss (dB)	Isolation L-R (dB)	Isolation L-I (dB)	VSWR RF Port (:1)	VSWR LO Port (:1)
RF	LO	LO +17dBm	LO +17dBm	LO +17dBm	LO +17dBm	LO +17dBm
10.00	40.00	6.43	32.26	35.01	1.13	2.07
20.00	50.00	6.58	33.52	36.23	1.07	2.19
103.44	73.44	6.60	32.25	33.97	1.08	2.01
200.00	170.00	6.78	30.89	32.03	1.13	1.96
290.31	260.31	6.75	29.76	30.61	1.18	1.91
500.00	470.00	6.94	28.74	29.28	1.29	1.83
570.63	540.69	6.81	28.80	29.04	1.34	1.81
757.50	727.50	7.00	28.06	28.08	1.48	1.81
944.38	913.91	7.05	28.00	26.87	1.66	1.80
1037.80	1007.40	7.37	28.67	26.49	1.72	1.74
1318.10	1288.00	6.81	27.69	26.66	1.92	1.69
1505.00	1474.90	6.68	27.57	27.97	1.99	1.65
1598.40	1568.30	6.65	27.30	28.78	1.75	1.91
1785.30	1755.00	6.71	27.75	28.96	1.89	1.91
1972.20	1942.10	6.57	29.51	31.44	1.76	1.75
2065.60	2035.10	6.76	28.94	33.79	1.68	1.66
2252.50	2222.10	6.61	30.22	36.80	1.68	1.49
2439.40	2408.60	6.63	31.19	37.00	1.69	1.14
2626.30	2596.00	6.95	30.21	30.13	1.49	1.26
3000.00	2969.30	8.58	32.46	26.88	1.90	2.47

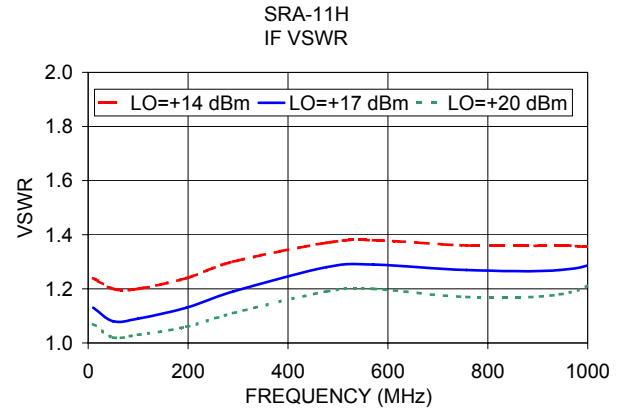
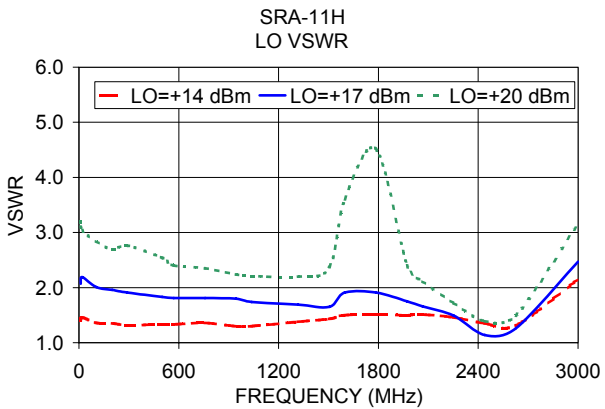
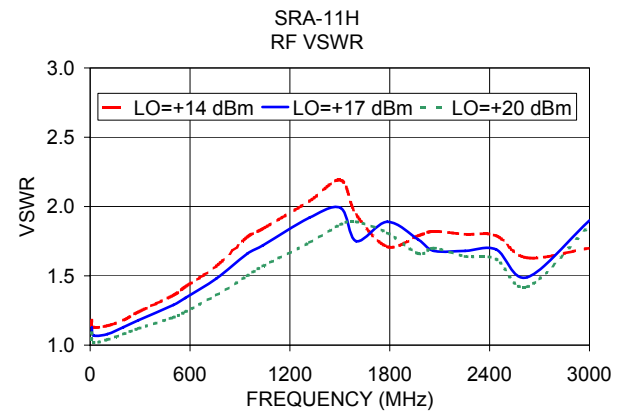
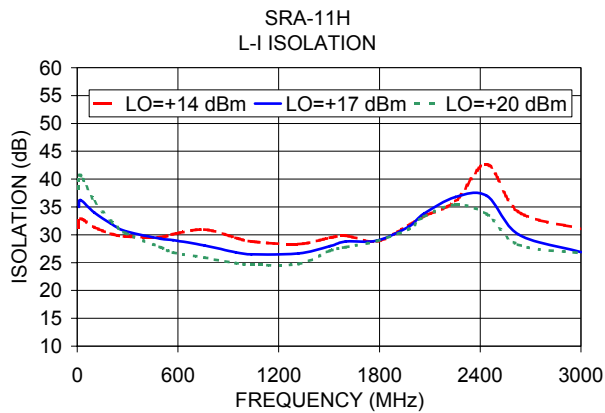
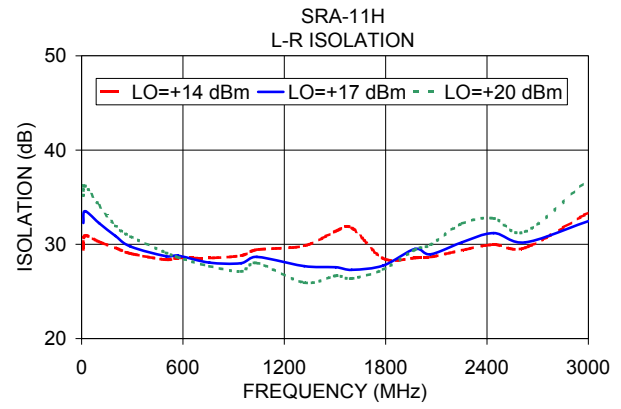
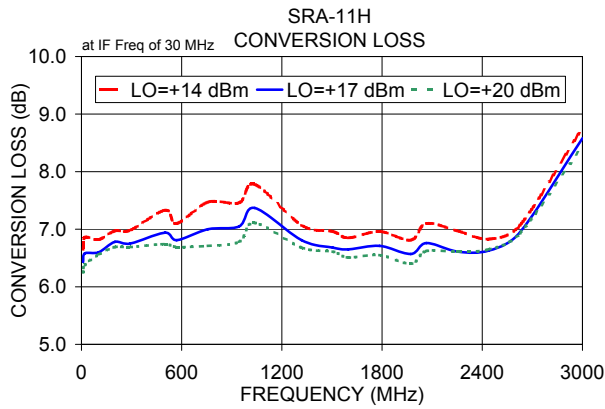
Electrical Schematic



Notes

- Performance and quality attributes and conditions not expressly stated in this specification document are intended to be excluded and do not form a part of this specification document.
- Electrical specifications and performance data contained in this specification document are based on Mini-Circuit's applicable established test performance criteria and measurement instructions.
- The parts covered by this specification document are subject to Mini-Circuits standard limited warranty and terms and conditions (collectively, "Standard Terms"); Purchasers of this part are entitled to the rights and benefits contained therein. For a full statement of the Standard Terms and the exclusive rights and remedies thereunder, please visit Mini-Circuits' website at www.minicircuits.com/MCLStore/terms.jsp





Notes

- A. Performance and quality attributes and conditions not expressly stated in this specification document are intended to be excluded and do not form a part of this specification document.
- B. Electrical specifications and performance data contained in this specification document are based on Mini-Circuit's applicable established test performance criteria and measurement instructions.
- C. The parts covered by this specification document are subject to Mini-Circuits standard limited warranty and terms and conditions (collectively, "Standard Terms"); Purchasers of this part are entitled to the rights and benefits contained therein. For a full statement of the Standard Terms and the exclusive rights and remedies thereunder, please visit Mini-Circuits' website at www.minicircuits.com/MCLStore/terms.jsp

